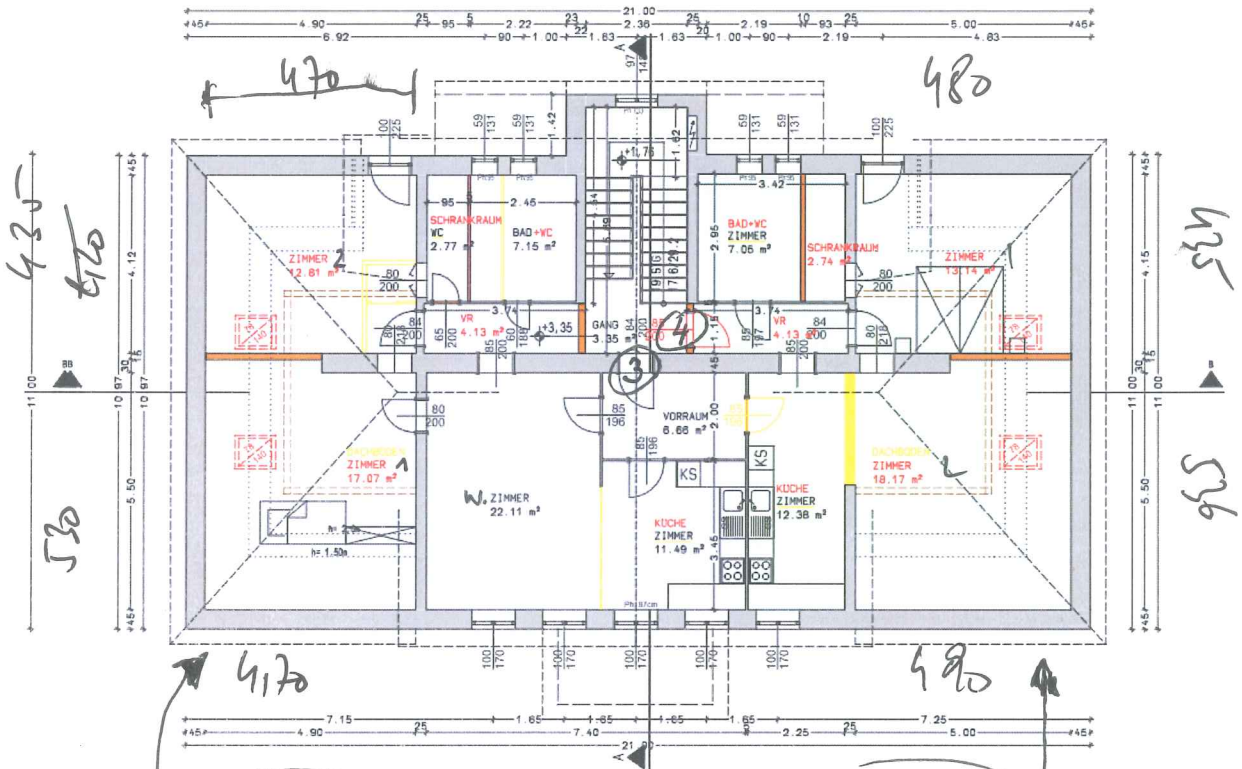


Top 5: 80,07m²
 Top 6: 57,61m²

GRUNDRISS 1. STOCK



TOP 3

Vorr	6,66 m ²
Küche	11,49 m ²
W. Zimmer	22,11 m ²
Vorr.	4,13 m ²
Bad	7,15 m ²
We	2,77 m ²
Zimmer 1	20,45 m ²
Zimmer 2	24,91 m ²
<hr/>	
	99,67 m ²

TOP 4

Vorr	4,13 m ²
Küche	12,38 m ²
Bad We	5,05 m ²
Schw.	5,05 m ²
Zi 1	20,88 m ²
Zi 2	27,44 m ²
<hr/>	
	74,93 m ²

Miete: $99,67 \times 4,50 = 448,52$
 BK: $99,67 \times 1,20 = 119,60$

 568,12

$74,93 \times 4,50 = 337,19$
 $74,93 \times 1,20 = 89,92$

 427,10